

Three-Month Intensive Course

Small classes with a maximum of 15 students for a reasonable cost (tuition fee + dormitory fee = 260,000 yen)

【Recruitment Class and Entrance Period】

Class: Beginners (around N4 level)/Capacity: 15 students

Class periods: Apr. - June, July - Sept., Oct. - Dec., and Jan. - Mar.

* Classes usually start at the beginning of April, July, October, and January.

【Lessons】

Lesson date: Monday - Friday (excluding public holidays)

Lesson hours: 1:30 AM to 5:00 PM (200 hours)

Learning materials: Cost borne by students (5,000 yen)

<Contents and Features of Lesson>

- Classes with a maximum of 15 students to facilitate acquiring communication skills
- Extracurricular activities and free tea-ceremony experience
- An international school with students from approximately 20 countries.



【Dormitory】

- Studio apartment: One room with a kitchen and bathroom (bath and toilet)
- Free Wi-Fi in every room.
- Provided with a refrigerator, air conditioner, electrically heated carpet, and small table.
- Water service for free and gas and electric bills borne by students
- Rental bedquits, blankets, and sheets are available, or otherwise purchased by the school on behalf of students.
- About 15 minutes on foot to the school

tea-ceremony



【Special Support】

- Part-time job opportunities and preparation for job interviews
(Support for counseling about part-time jobs, writing resumes, interview practice, etc.)
- Ward office procedures and bank account opening for students on a working visa

【Cost】

Total payment to school: 260,000 yen

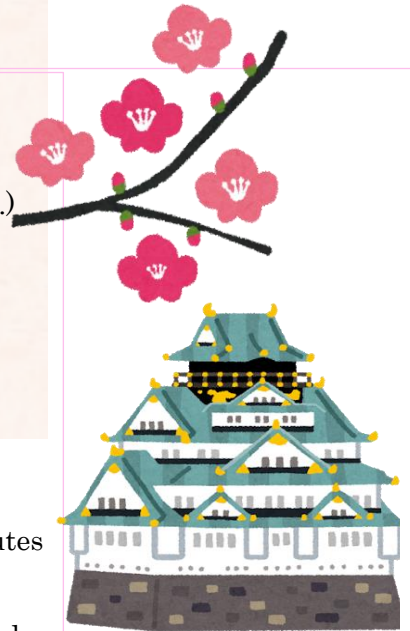
(Tuition fee: 160,000 yen; Dormitory fee: 100,000 yen)

*Learning materials are charged separately.

【Access】

- Easy access to the center of Osaka! (About 10 minutes to Tennoji and about 15 minutes to Namba)

It takes 30 seconds from JR Nagai Station and 3 minutes from Nagai Station of Osaka Metro Midosuji Line.



【Inquiries】 ※Contact us with inquiries about each entry period※

Seigan Japanese Language School

Pref.558-0003 3-2-9 Nagai, Sumiyoshi-ku, Osaka, Osaka

TEL : +81-6-6606-0238

E-mail : scjc@earth.ocn.ne.jp

URL : <https://www.seigannihongo.com/>

Facebook : <http://www.facebook.com/seigan.jls>